

HO-361

## Ida Holzweig's Double Stone House #1 (Brown Law Office)

### **Architectural Survey File**

This is the architectural survey file for this MIHP record. The survey file is organized reverse-chronological (that is, with the latest material on top). It contains all MIHP inventory forms, National Register nomination forms, determinations of eligibility (DOE) forms, and accompanying documentation such as photographs and maps.

Users should be aware that additional undigitized material about this property may be found in on-site architectural reports, copies of HABS/HAER or other documentation, drawings, and the “vertical files” at the MHT Library in Crownsville. The vertical files may include newspaper clippings, field notes, draft versions of forms and architectural reports, photographs, maps, and drawings. Researchers who need a thorough understanding of this property should plan to visit the MHT Library as part of their research project; look at the MHT web site ([mht.maryland.gov](http://mht.maryland.gov)) for details about how to make an appointment.

All material is property of the Maryland Historical Trust.

***Last Updated: 02-07-2013***

HO-361

Ida Holzweig's Double Stone House #1 (Brown Law Office)  
8357 Main Street  
Ellicott City  
Private

Facing north on the southwest corner of Main & Hill Streets in Ellicott City, this 2 1/2-story, four-bay stone duplex has two gabled dormers on the south side of the roof, with 6/6 sash windows and pilasters. The two central bays of the first floor have nine-light doors with four-light transoms and paneled jambs. All front windows have 6/6 sash, with granite sills. All openings have large granite lintels. On the ground in front of the first floor windows (1st and 4th bays) are cellar entrances with double doors.

There is a stone wing on the rear of the building, with a frame enlargement.

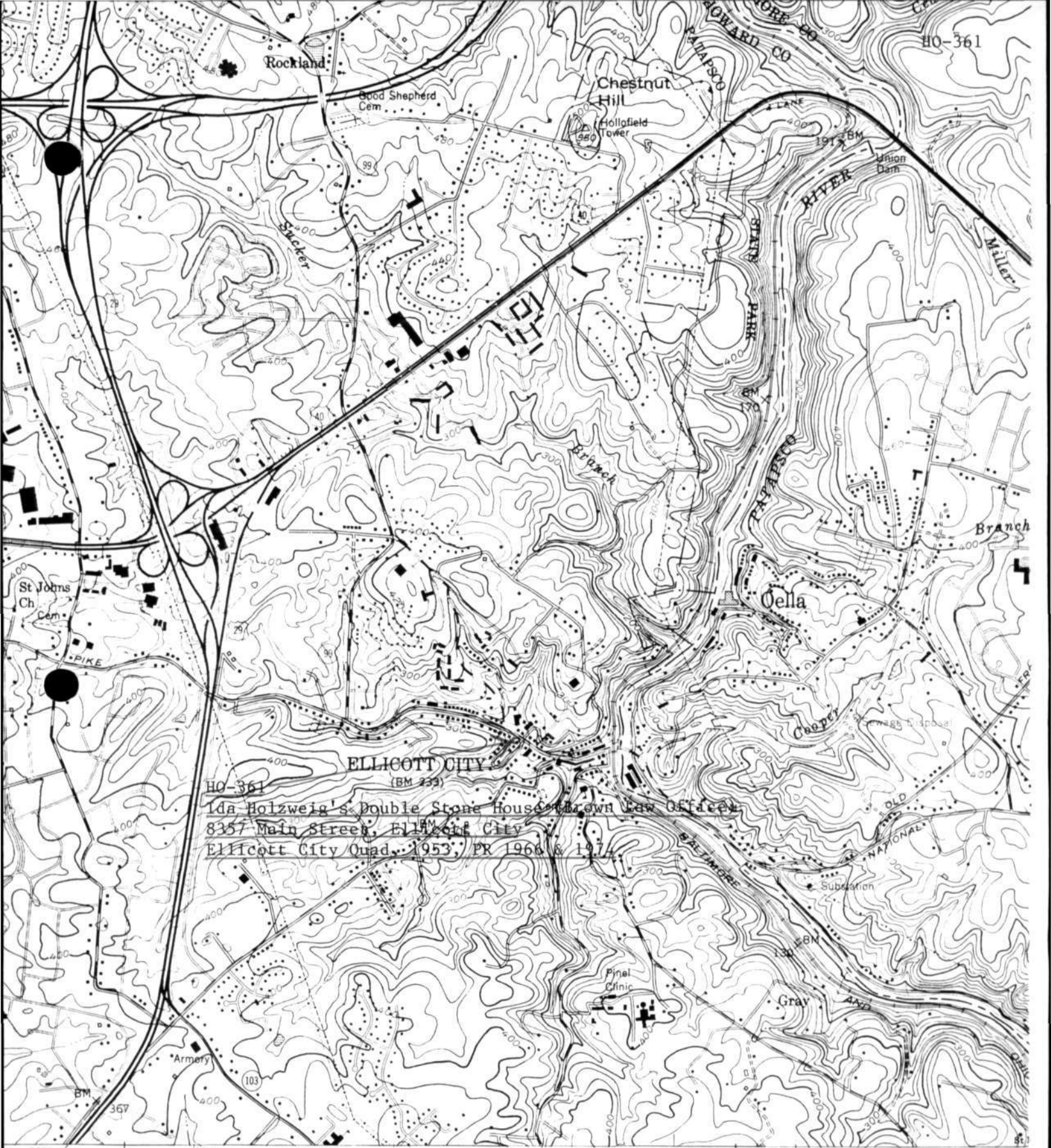
The wing has a door and a 1/1 window in the east facade of the stone section. This facade of the frame enlargement above the stone section holds two 1/1 sash windows.

The west facade of this wing has a 6-paneled door and a 6/6 sash window in the stone section, both with granite lintels. The frame enlargement above has 6/6 sash windows.

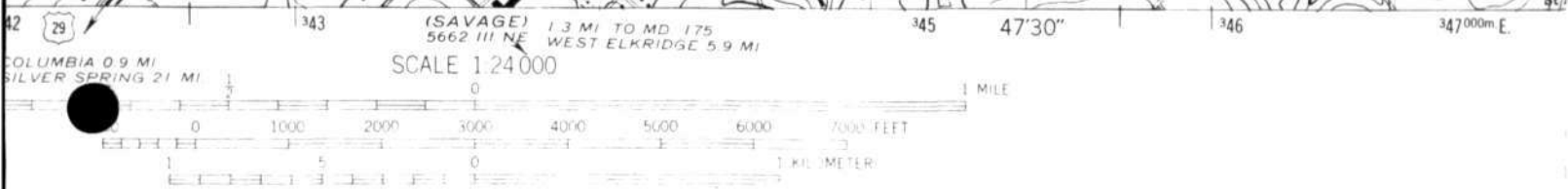
The south side of the wood-shingled roof of the main block has two 4/4 sash shed-roofed dormers. The main block also has flush chimneys on either end.

The rear wing has a shallow gabled roof on the enlargement. A shed-roofed frame addition to the wing has a central door in the south facade, flanked by two 6/6 sash windows on either side.





HC-361  
 Ida Holzweig's Double Stone House  
 Brown Law Offices  
 8357 Main Street, Ellicott City  
 Ellicott City Quad, 1953, PR 1966 & 1977



CONTOUR INTERVAL 20 FEET  
 NATIONAL GEODETIC VERTICAL DATUM OF 1929

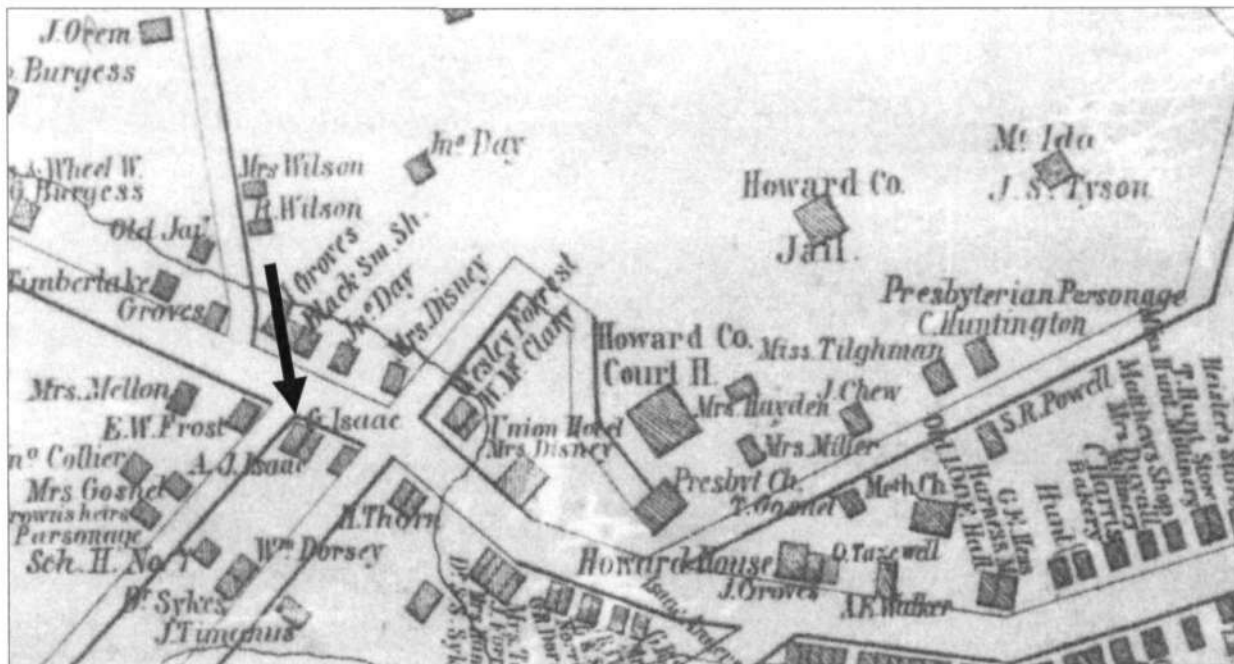


HO-361

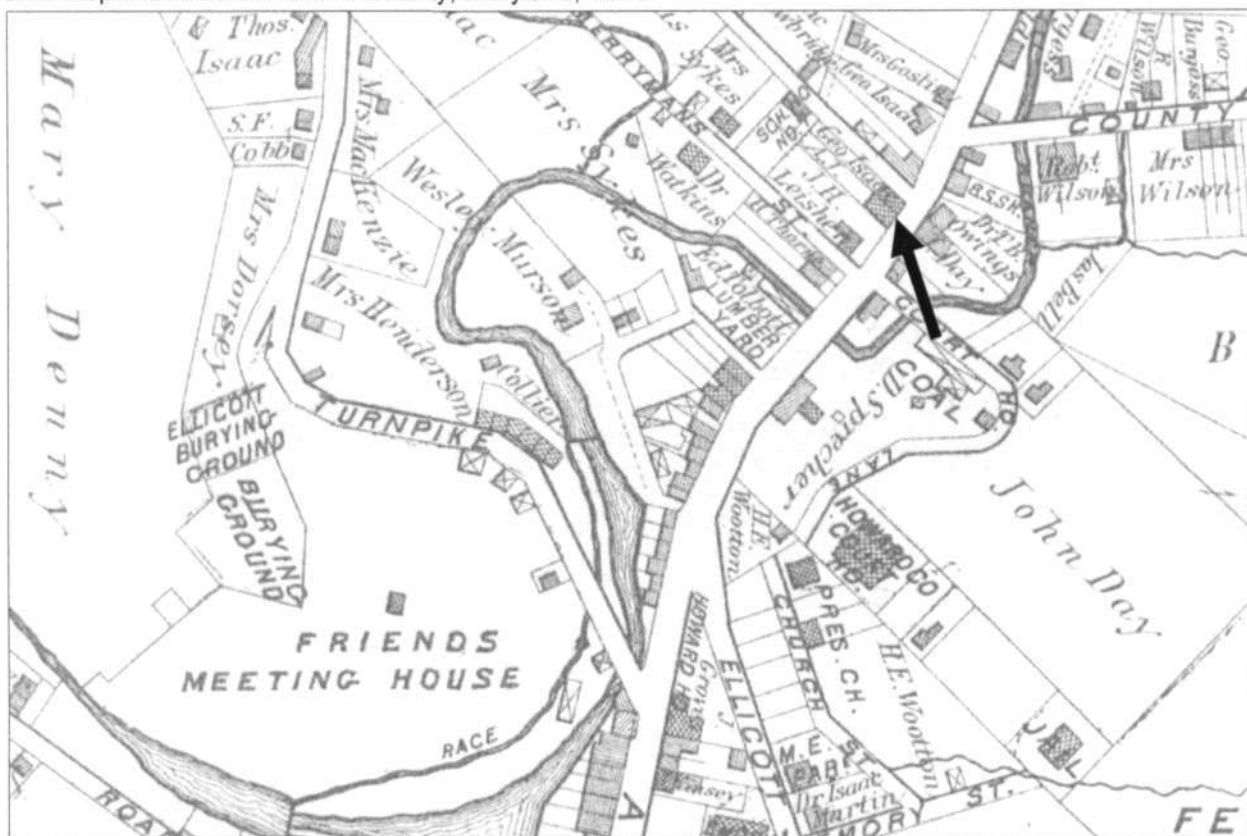
Ida Holzweig's Double Stone House #1 (Brown Law Office)

8357 Main Street (MD 144), Ellicott City

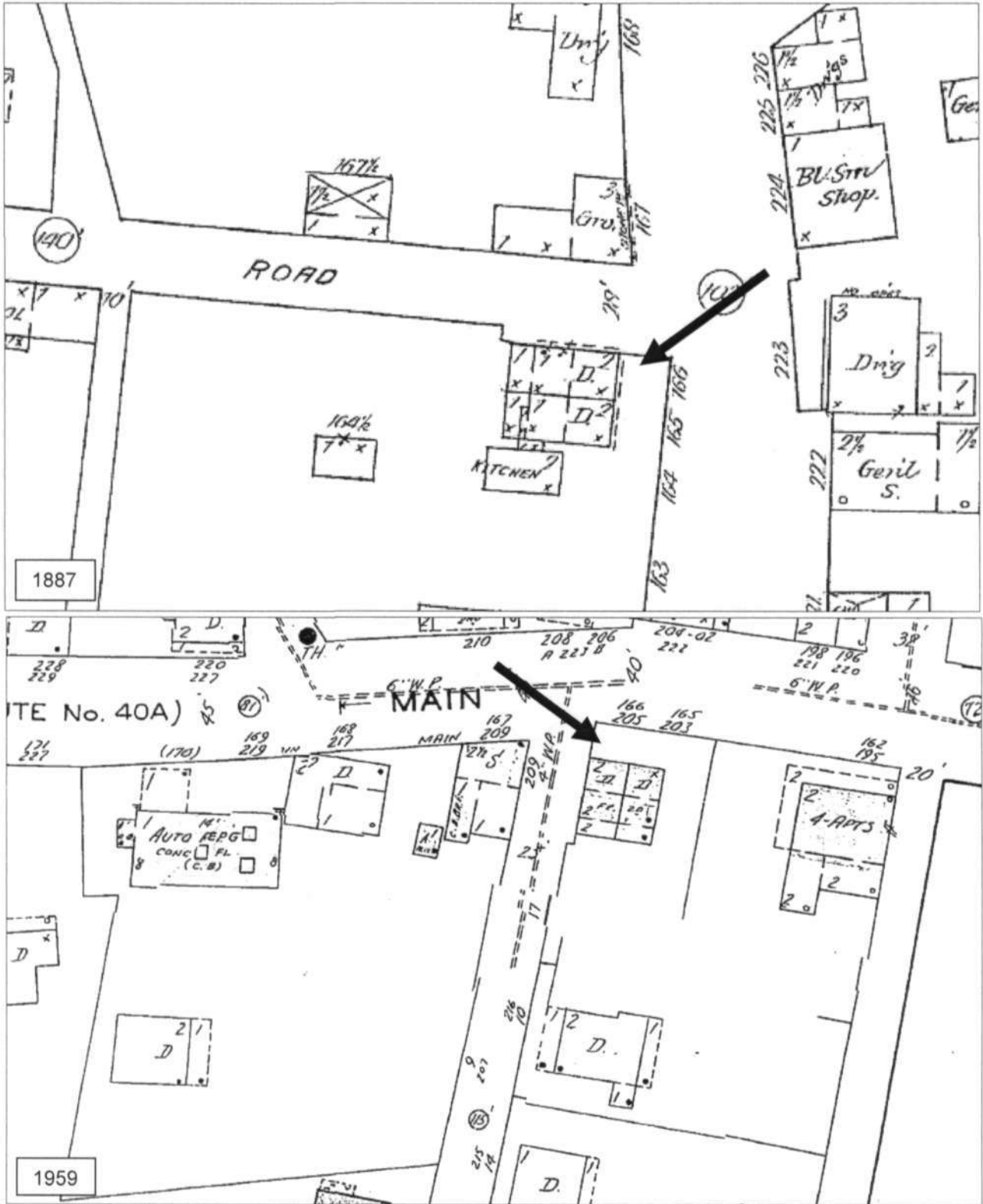
Martenet's Map of Howard County Maryland, 1860



G.M. Hopkins Atlas of Howard County, Maryland, 1878



HO-361  
Ida Holzweig's Double Stone House #1 (Brown Law Office)  
8357 Main Street (MD 144), Ellicott City  
Sanborn Maps

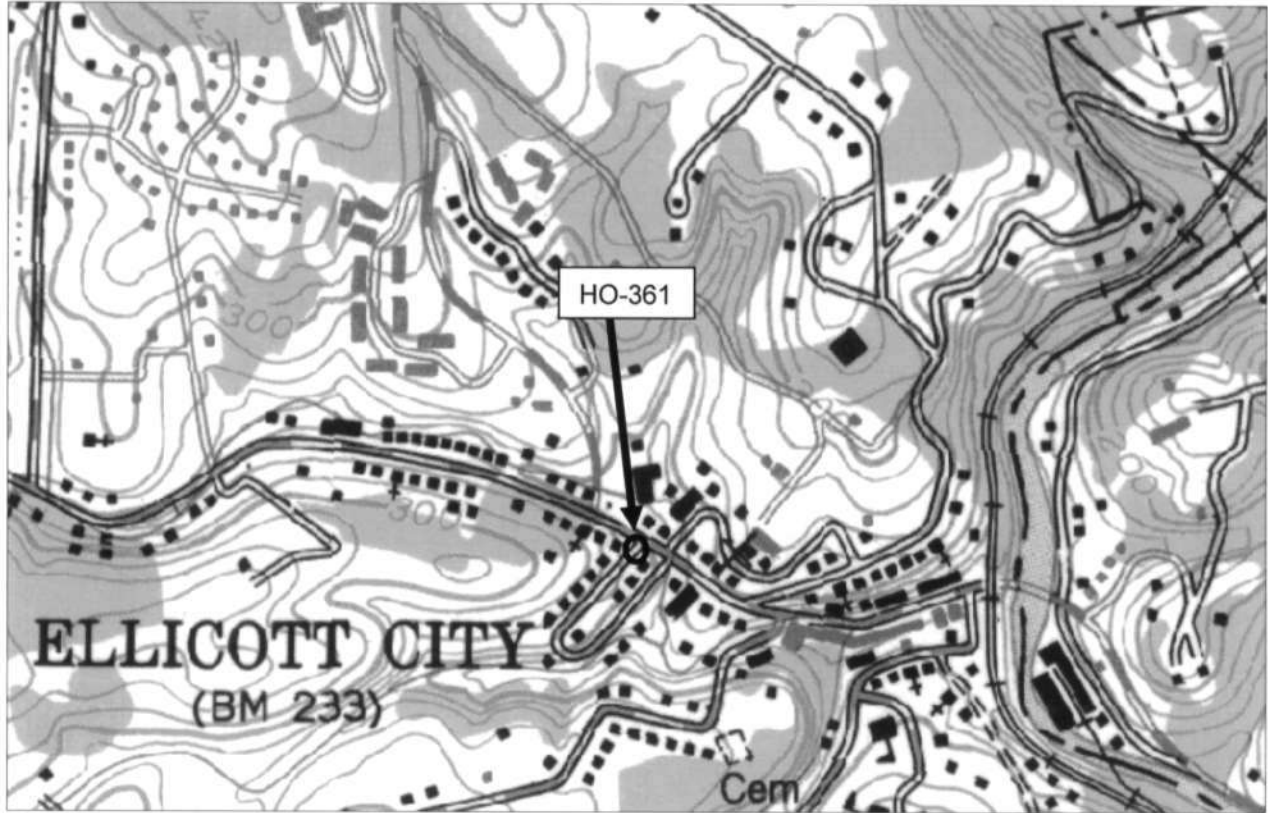


HO-361

Ida Holzweig's Double Stone House #1 (Brown Law Office)

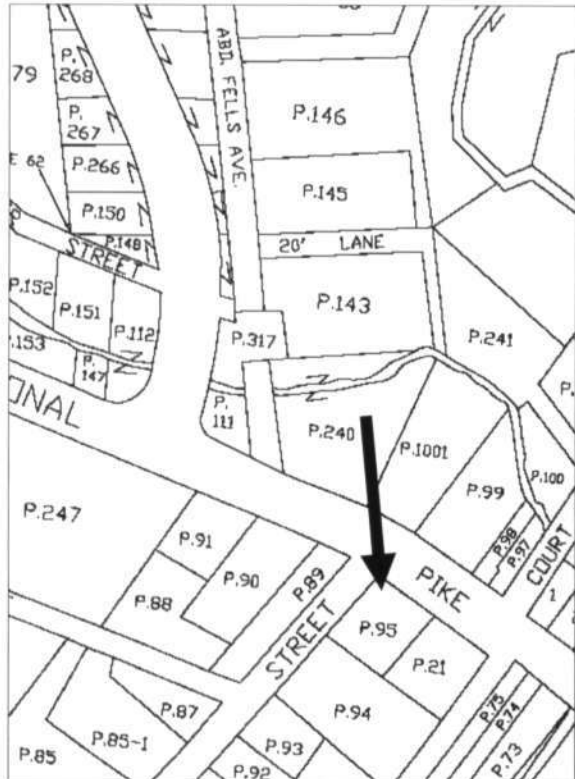
8357 Main Street (MD 144), Ellicott City

Ellicott City quad 1953, Photorevised 1966 and 1974



Tax Map 25A, Parcel 95

National Web Map Service 6" Orthophoto Map, c. 2010



HO-361  
Ida Holzweig's Double Stone House #1 (Brown Law Office)  
8357 Main Street (MD 144), Ellicott City  
Photos by Jennifer K. Cosham, 11/28/2012  
East elevation



Southeast elevation





HO.361

511100 # City 8357 Main

8357

888 8/72

The Holzweigs double stone house #1